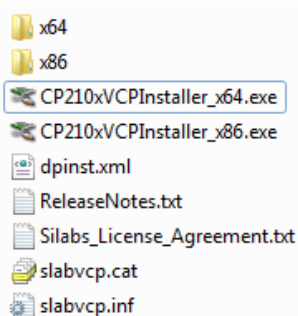


## ZDL700 Data download

### ***Cable driver installation***

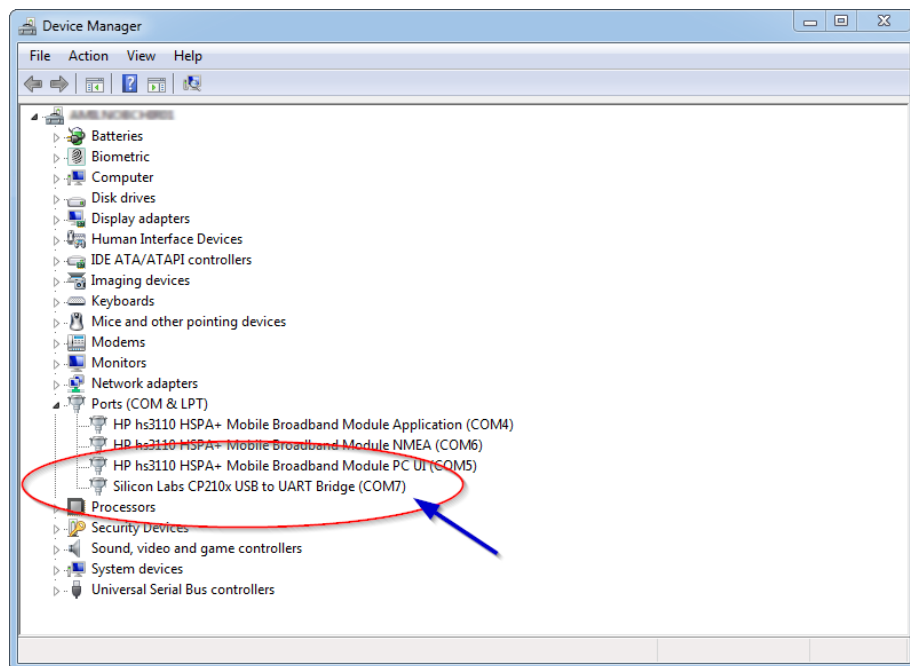
First step is to install the ZDC102 cable drivers.

The driver must be installed from the folder **CP201x\_VCP\_Windows**:



Select the exe file depending on the PC used (32 or 64 bit).

When installed, and with the cable connected, opening the window **Device Manager** is possible to read what is the COM port assigned (in this example the port is the COM7).



#### **Sede Operativa Geomax s.r.l.**

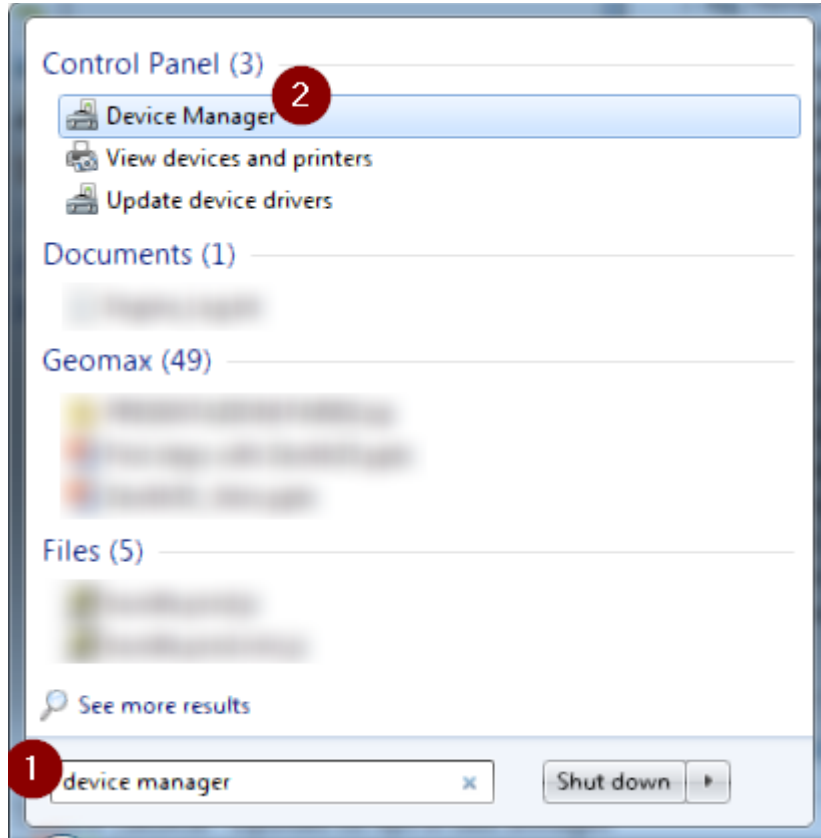
Via Marconi 86/ad  
60015 Falconara Marittima (AN)  
www.geomax-positioning.it

Tel. 071 9173386  
Fax. 071 9165263  
Mail. info@geomax-positioning.it

#### **Supporto tecnico survey:**

Tel. 071 9164132  
Mail. supporto.tecnico@geomax-positioning.it

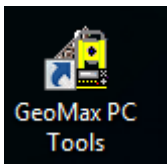
In order to open the Device Manager, click on the Windows icon and search on the search bar (1) **device manager**.

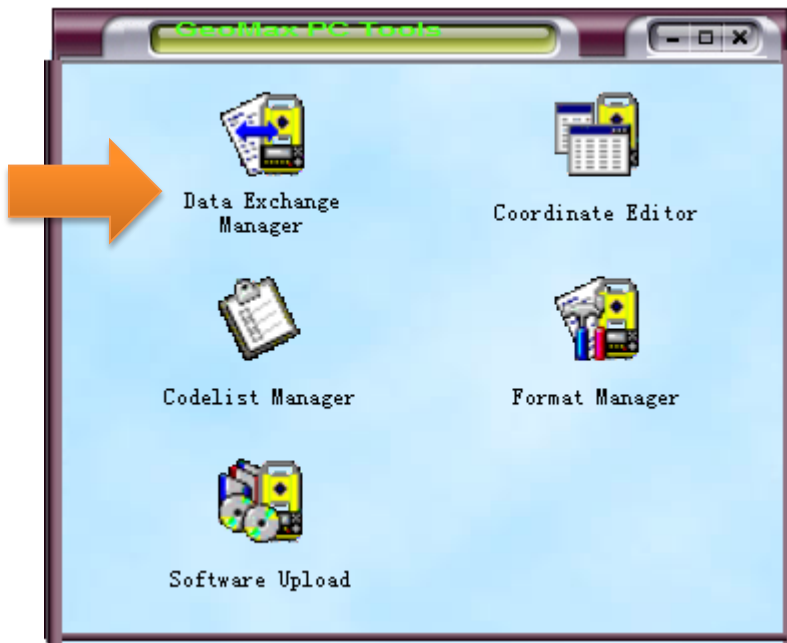


Click on the result (2)

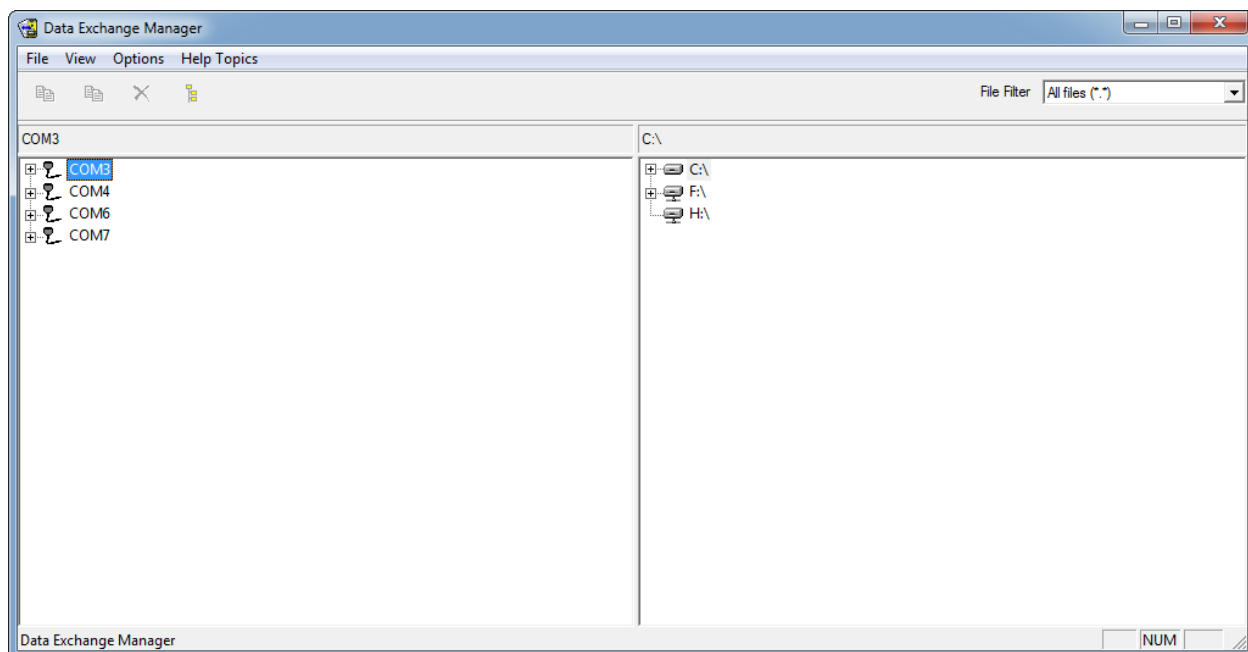
## ***Configuration and use of the data download software***

To download the instruments data it is necessary to install the software **GeoMax PC Tools**. The software can be downloaded from GeoMax partner area.






Click on **Data Exchange Manager** to open the function to download data




First time this page is opened it is necessary to setup the instrument communication settings.


## How check the communication settings on the ZDL700

On the instrument press the button 

Scroll down to the menu: **10. Settings**

Enter in the menu pressing the button 

Scroll down to the menu: **6. RS232**

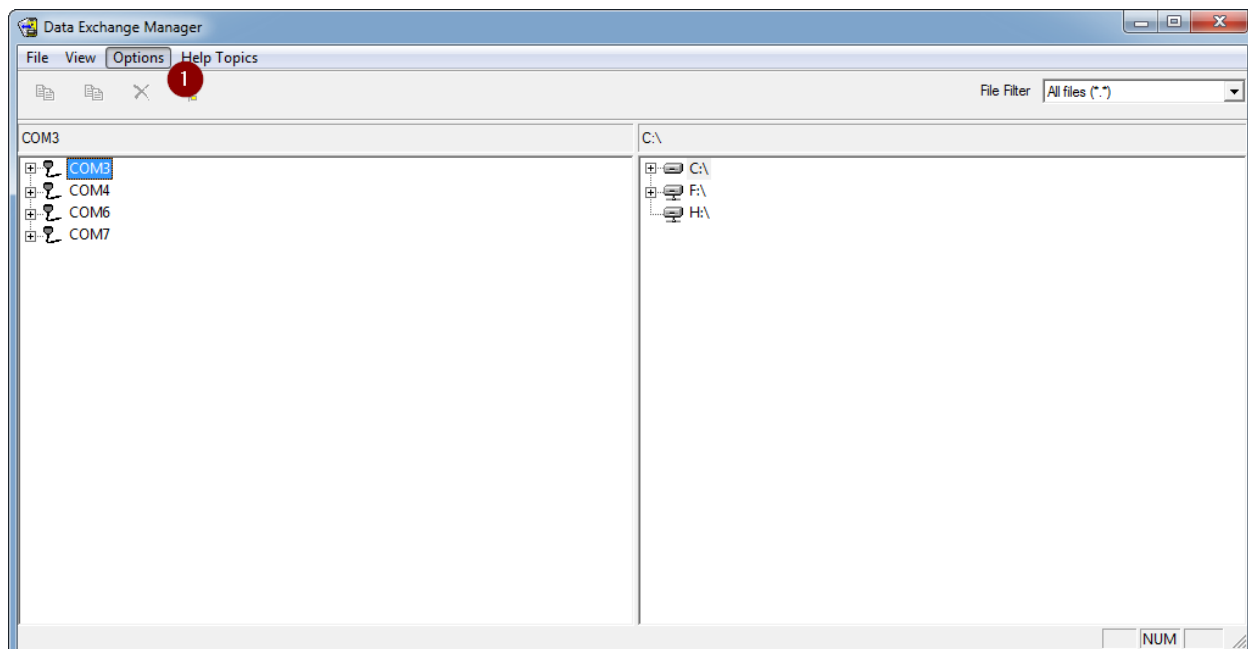
Press the button 

Read the defined values. The default values are:

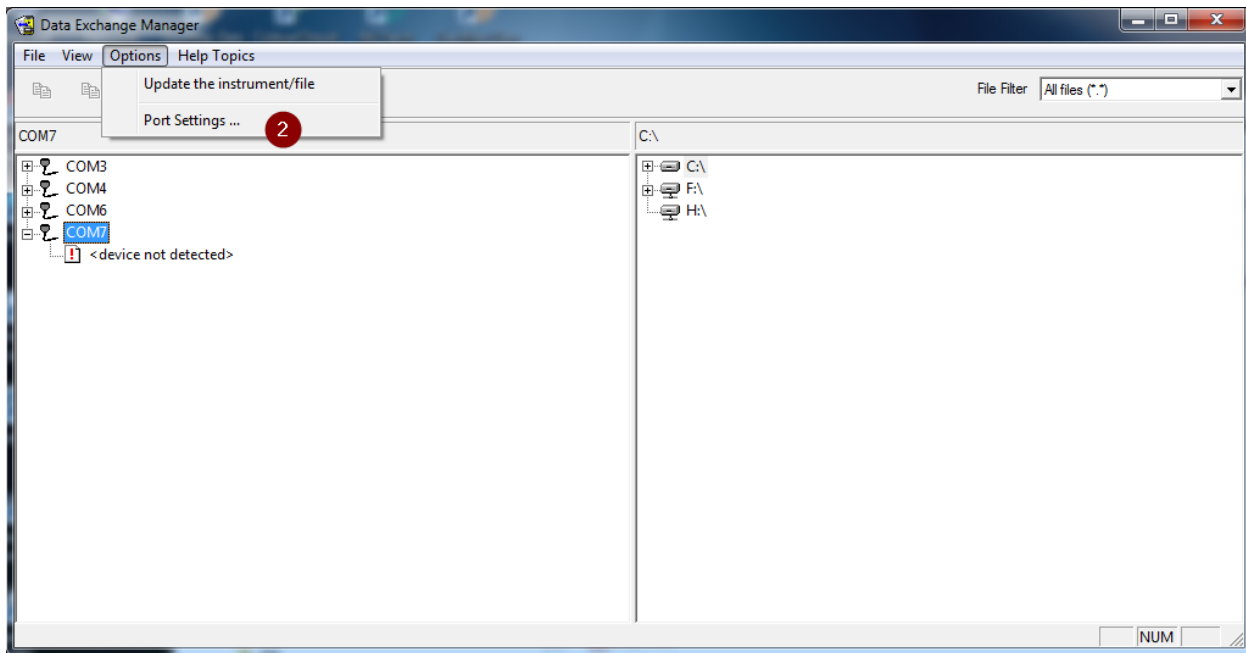
RS232	
<b>Baudrate</b>	<b>19200</b>
<b>Parity</b>	<b>None</b>
<b>Stop Bit</b>	<b>1</b>
<b>Data Bit</b>	<b>8</b>

## How configure the communication settings in GeoMax PC Tools

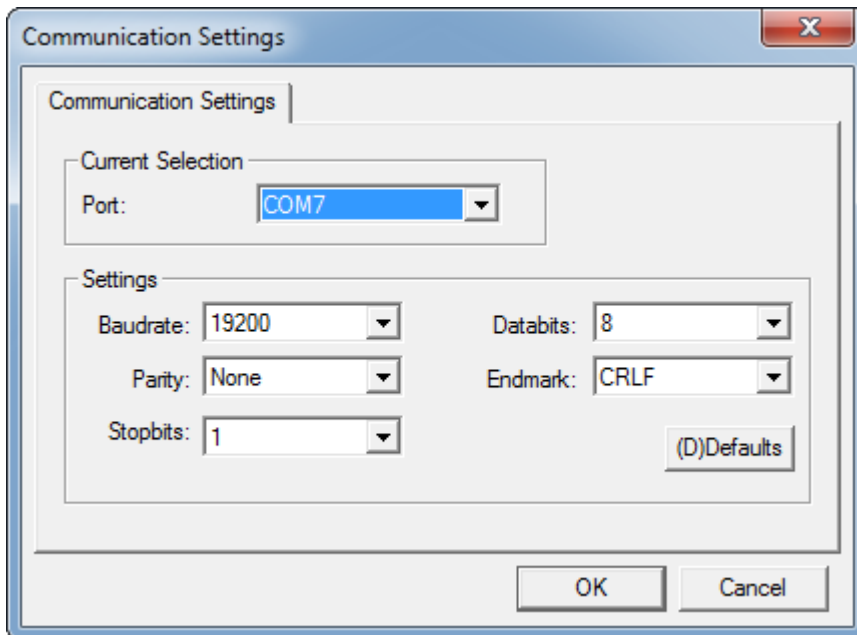
Once the software is opened, click on **Options (1)**



Click on **Port Settings...** (2)

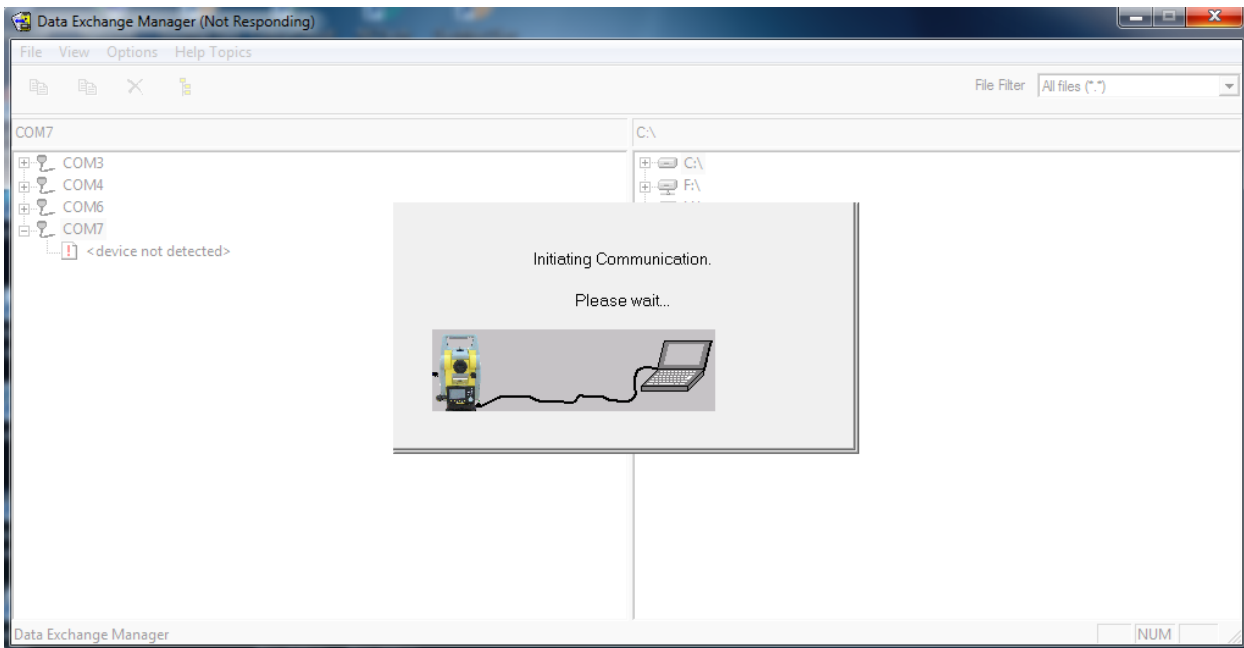


The configuration page is opened

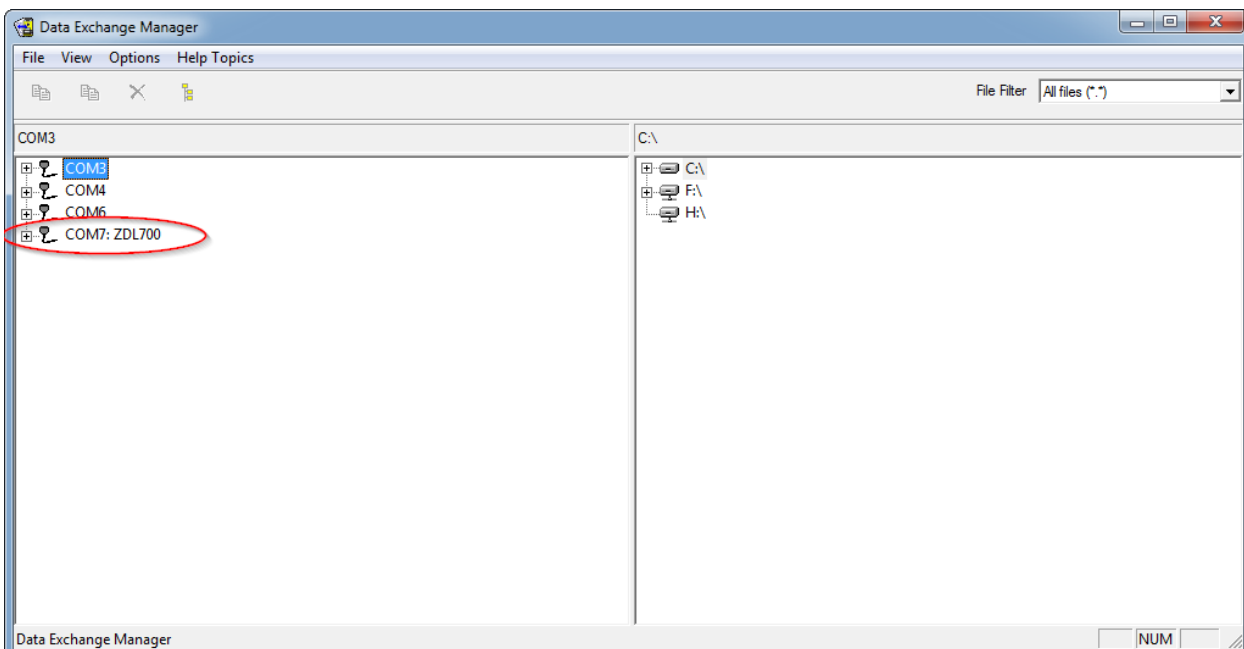


Enter the COM port you have seen in Device Manager page and enter the communication settings read on the ZDL instruments, press OK.

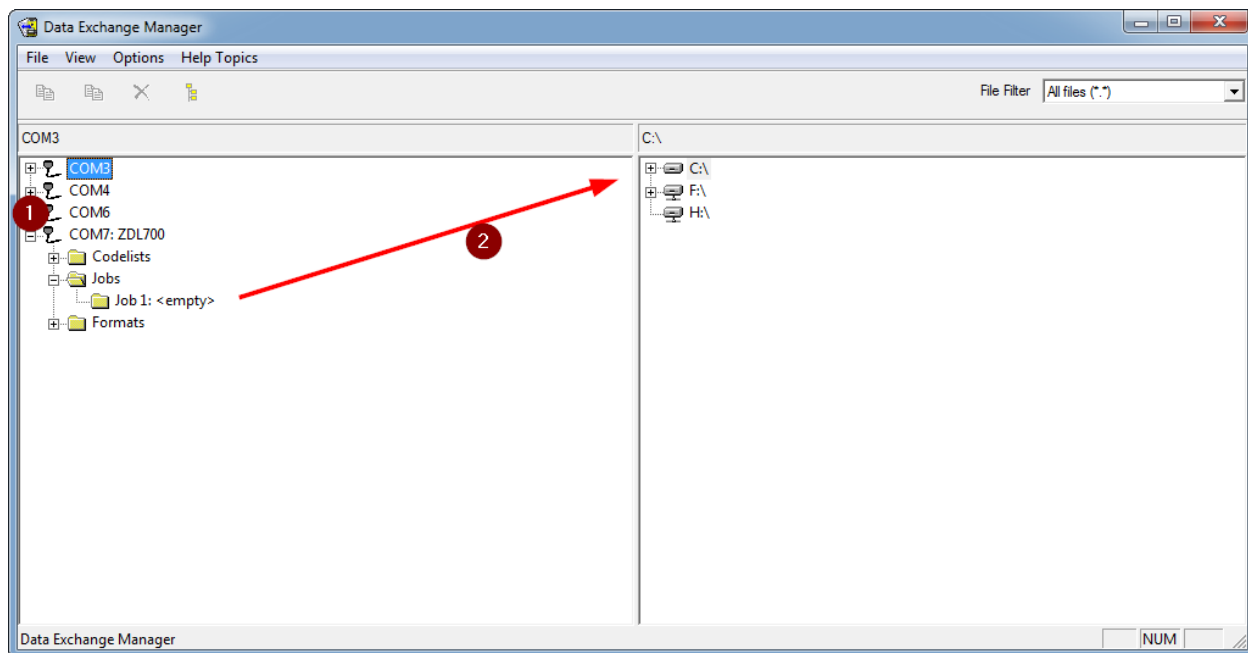
Wait for instrument connection.



When instrument is connected on the left side you can see the ZDL700 name near the selected COM port.



Click on the icon + **(1)** to open the folders inside the instrument.



Open **Jobs** to see the job with the saved measures, drag **Job1** (2) in a folder on the PC hard disk on the right side to save the measures on the PC.